



# NEW HOLLAND

## *E20.2<sub>SR</sub> E22.2<sub>SR</sub> E27.2<sub>SR</sub>*

**NEW HOLLAND KOBELCO**



	E20.2SR	E22.2SR	E27.2SR
NET FLYWHEEL POWER	17 kW - 23 hp	17 kW - 23 hp	17 kW - 23 hp
OPERATING WEIGHT (MAX)	2 230 kg	2 550 kg	2 760 kg
REAR END SWING RADIUS	700 mm	740 mm	750 mm
BUCKET CAPACITY	0.035 - 0.088 m <sup>3</sup>	0.035 - 0.088 m <sup>3</sup>	0.035 - 0.088 m <sup>3</sup>



**NEW HOLLAND**

**CONSTRUCTION**

**BUILT AROUND YOU**

# E20.2/22.2/27.2SR\*

## PERFORMANCE

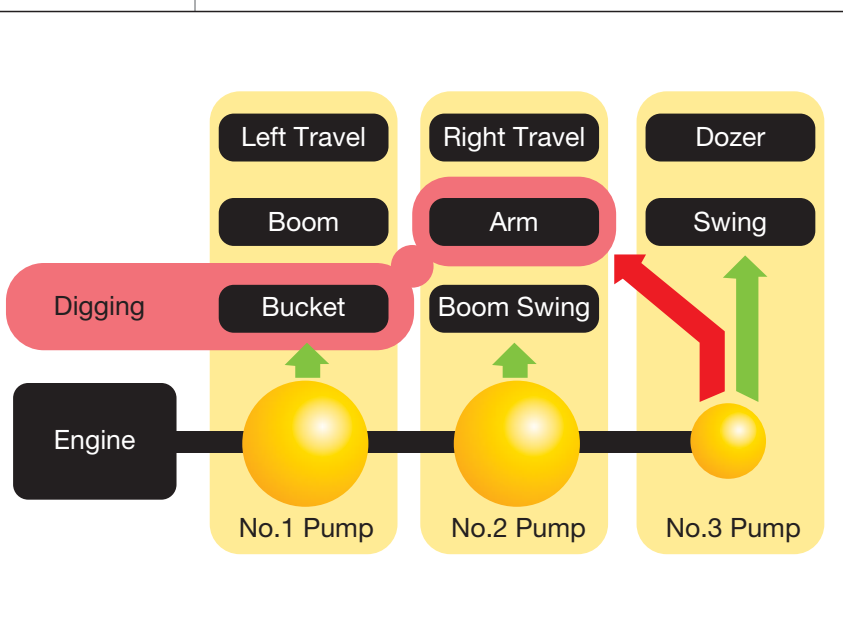
FAST, FULL-POWERED  
DIGGING AND LEVELLING



### DOZER BLADE SHAPE

- Conventional dozer blades simply push the earth straight ahead and the earth spills down behind the blade. Our new blade design solves this problem by forming the earth into an arc that always falls forward. As this prevents earth from falling behind the blade, only “one pass” is needed.

POWERFUL AND EFFICIENT DOZER  
PERFORMANCE FOR OUTSTANDING  
LEVELLING OPERATIONS



### INTEGRATED-FLOW PUMP SYSTEM (THREE PUMPS) FOR TOTAL SIMULTANEOUS MOVEMENTS

- The instant the machine begins to dig, extra output from the third pump (which otherwise powers the swing and dozer circuits) is directed to the arm circuit for added power. This ensures fast and smooth arm operation even under heavy loads.

\* A product of the global alliance between CNH and KOBELCO



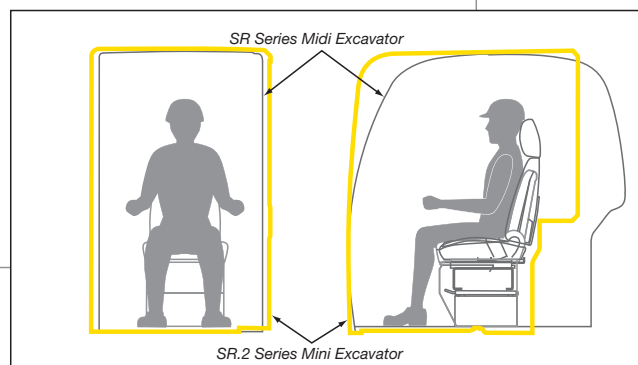
# COMFORT SPACIOUS WORK ENVIRONMENT

- “High Space” cab with perfect visibility area in all directions thanks to the wide glass area and transparent cab roof. Extremely low noise level and effective reduction of vibrations. All controls are within hand reach and in ergonomic position: more like a “living room” than a cab, providing maximum operator comfort.
- The floor space has been widened and the sliding range of the seat has been increased to give operators plenty of foot room. Wide operational space with more room between the left and right control consoles.



## RESPECT FOR THE ENVIRONMENT

The E20.2/22.2/27.2SR respect the European “reduced noise level” as per directive 2000/14/EC phase 2.



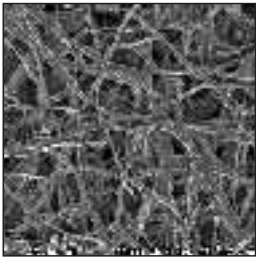
# E20.2/22.2/27.2SR

## MAINTENANCE AND DURABILITY

### EASY MAINTENANCE

- Start-up checks are essential for safe and reliable machine operation. With the SR.2 machines, all start-up checks can be performed at ground level, with an easy-to-understand layout and cover design that simplify access and reduce check times.

CONVENTIONAL FILTER



SUPER FINE FILTER

### NEW HOLLAND EXCLUSIVE SUPER FINE FILTER

- This exclusive super-fine filter is environmentally friendly, lasts 1000 hours, and is easy to replace.



### HIGH DURABILITY

Whether you are digging, loading, lifting or levelling, it is the attachment that provides the key to better productivity. Our new high-tensile steel front attachment ensures that you can handle virtually any application. Similarly the cross-section area of the box-shaped boom has been increased for added strength.

#### Boom flexing resistance

Lengthwise: **12% UP**

Lateral: **17% UP**

Forged boom top  
Self-locking pins firmly lock the bottom and arm to prevent the boom top from opening laterally



# SPECIFICATIONS



## MAIN FEATURES

	<b>E20.2SR</b>	<b>E22.2SR</b>	<b>E27.2SR</b>
Net flywheel power (ISO14396)	17 kW/23 hp	17 kW/23 hp	17 kW/23 hp
Operating weight with steel shoes and standard arm canopy (kg)	2230	-	2620
cab (kg)	-	2550	2760
Maximum digging depth (mm)	2650	2650	2790
Breakout force:			
bucket (kN)	20	20	22
pdipperstick 1120 mm (kN)	14	14	15
Transport length (mm)	3820	3820	4130
Transport width (mm)	1400	1400	1500
Transport height (mm)	2460	2460	2500



## ENGINE

Make .....	YANMAR
Model.....	3TNV82A-SYB
Type .....	4-stroke diesel, direct injection
Number of cylinders .....	3
Displacement.....	1330 cm <sup>3</sup>
Rated speed .....	2200 rpm

“Auto-Idling” as standard.

Tier 2 emissioned engine conforms to 97/68/EC STAGE 2 Rules



## ELECTRICAL SYSTEM

Batteries.....	1 x 64 Ah
Voltage.....	12 V
Alternator .....	40 A
Starter motor.....	1.7 kW



## HYDRAULIC SYSTEM

**S.H.S. (Smart Hydraulic System)** with two axial piston variable displacement pumps and one gear pump for completely fully simultaneous movements, including blade and slewing.

The three pumps ensure full use of all installed hydraulic power in individual and combined movements.

Pumps:

Variable displacement hydraulic pumps .....	axial piston type
Total delivery .....	2 x 26 l/min
Gear pump delivery.....	14 l/min
Maximum operating pressure .....	230 bar



## SWING

Hydraulic motor.....	axial piston type
Swing speed.....	8.7 rpm
Swing brake.....	automatic
Boom slewing angle:	
- left .....	60°
- right .....	55°
Additional bolted counterweight is available when “High stability” performance is required.	
Weight.....	+ 172 kg
Rear end swing radius.....	+ 74 mm
Minimum (700/750 mm) rear end swing radius ensures upperstructure to remain within track overall dimensions.	



## UNDERCARRIAGE

	<b>E20.2SR</b>	<b>E22.2SR</b>	<b>E27.2SR</b>
Length of track on ground (mm)	1490	1490	1500
Gauge (mm)	1150	1150	1250
Shoe width (Rubber/Steel) (mm)	250	250	250
Ground pressure (bar)	0.26/0.28	0.26/0.28	0.29/0.31
Upper lower rollers	0-3	0-3	1-4
Travel speeds	2	2	2
<b>“Automatic DownShift” as standard</b>			
Travel speed range (Rubber tracks) (km/h)	2.3/4.1	2.3/4.1	2.3/4.1
Travel speed range (Steel tracks) (km/h)	2.5/4.2	2.5/4.2	2.5/4.2
Maximum continuous slope:			
- for all models .....	58% (30°)		



## BLADE

	<b>E20.2SR</b>	<b>E22.2SR</b>	<b>E27.2SR</b>
Width x height (mm)	1400x300	1400x300	1500x300
Blade lift (mm)	425	425	445
Blade lower (mm)	290	290	335

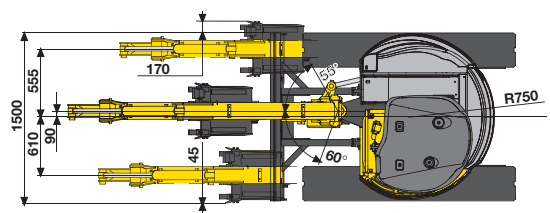
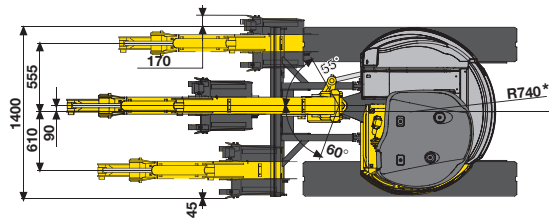
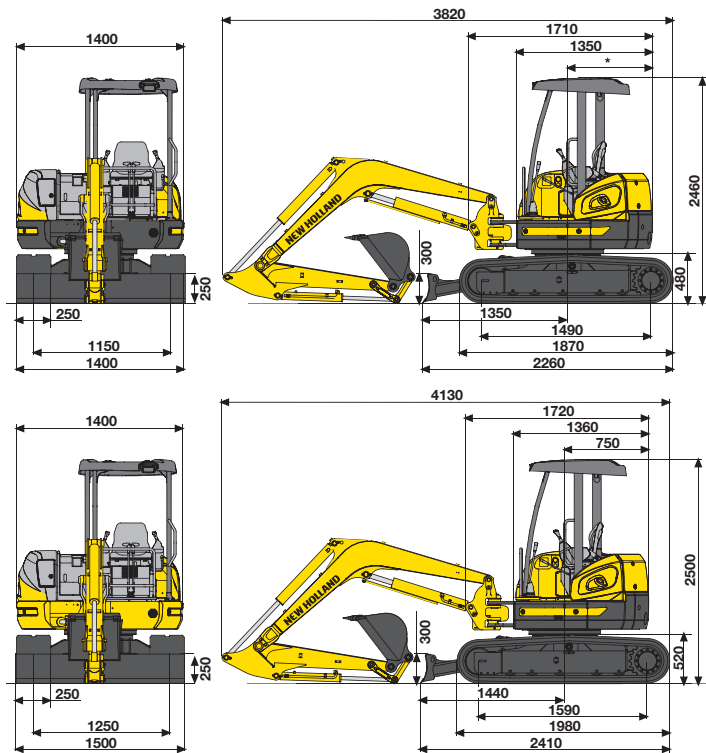


## CAPACITIES

	Litres
Fuel.....	28.0
Coolant .....	3.8
Engine oil .....	5.5
Hydraulic system.....	25.0

# E20.2/22.2/27.2SR

## DIMENSIONS (mm) - OPERATING WEIGHT



\* E20.2SR: 700 mm  
\* E22.2SR: 740 mm

## DIGGING PERFORMANCE

(cab/canopy)

### E20.2-22.2SR

DIPPERSTICK	mm	980	1330 (standard)
A	mm	2030/1800	2070/1900
B	mm	4060	4400
C	mm	4190	4520
D	mm	2470/2720	2650/2950
E	mm	1790	2530
F	mm	3660/3960	3850/4190
G	mm	2300	2650
X	mm	425	425
Y	mm	290	290

### BREAKOUT FORCE

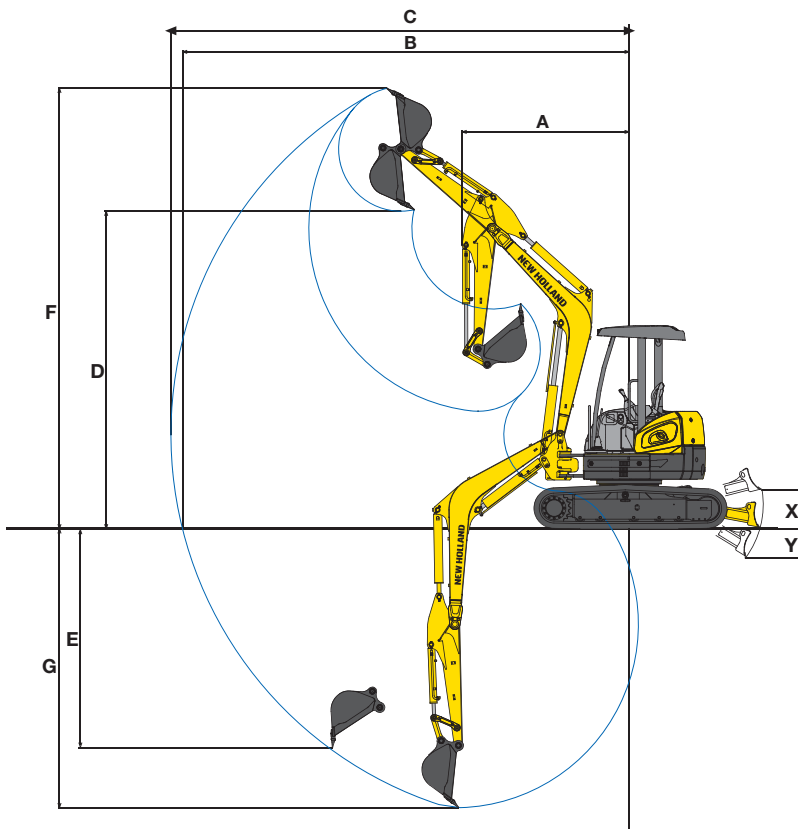
BUCKET	kN	20.0	20.0
DIPPERSTICK	kN	14.0	12.0

### E27.2SR

DIPPERSTICK	mm	1120	1370 (standard)
A	mm	2060/1830	2080/1880
B	mm	4510	4770
C	mm	4640	4890
D	mm	2970/3170	3170/3380
E	mm	2320	2560
F	mm	4260/4470	4470/4690
G	mm	2540	2790
X	mm	445	445
Y	mm	335	335

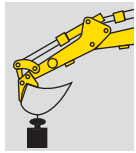
### BREAKOUT FORCE

BUCKET	kN	22.0	22.0
DIPPERSTICK	kN	15.0	13.0



# LIFTING CAPACITY

VALUES ARE EXPRESSED IN TONNES



## RADIUS OF LOAD

1.0 m		1.5 m		2.0 m		2.5 m		3.0 m		3.5 m		4.0 m		At max reach		REACH m
FRONT	SIDE	FRONT	SIDE	FRONT	SIDE	FRONT	SIDE	FRONT	SIDE	FRONT	SIDE	FRONT	SIDE	FRONT	SIDE	

### E20.2SR DIPPERSTICK 1 330 mm

HEIGHT																REACH m
+3.5 m								0.41	0.37							
+3.0 m								0.39	0.34							
+2.5 m																
+2.0 m								0.40	0.34	0.38	0.26					
+1.5 m						0.51	0.45	0.46	0.33	0.37	0.25					
+1.0 m				0.90	0.60	0.63	0.43	0.47	0.32	0.37	0.25			0.31	0.20	3.80
+0.5 m				0.86	0.57	0.61	0.41	0.46	0.31	0.36	0.24					
0				0.86	0.86	0.84	0.55	0.59	0.39	0.45	0.30	0.36	0.24			
-0.5 m	0.94	0.94	1.28	0.89	0.84	0.55	0.59	0.39	0.45	0.30	0.36	0.24				
-1.0 m	1.36	1.36	1.44	0.90	0.85	0.55	0.59	0.39	0.45	0.30						
-1.5 m	1.90	1.90	1.34	0.92	0.86	0.57	0.60	0.40								
-2.0 m			0.59	0.59	0.43	0.43										

### E22.2SR DIPPERSTICK 1 330 mm

HEIGHT																REACH m	
+3.5 m																	
+3.0 m								0.57	0.52								
+2.5 m										0.54	0.40						
+2.0 m								0.59	0.53	0.55	0.40						
+1.5 m					0.92	0.71	0.70	0.52	0.54	0.39	0.44	0.32					
+1.0 m					0.97	0.67	0.70	0.52	0.54	0.38	0.43	0.31			0.42	0.30	3.80
+0.5 m					0.94	0.65	0.68	0.48	0.53	0.38	0.43	0.31					
0					0.94	0.64	0.67	0.48	0.52	0.37							
-0.5 m	1.34	1.34	1.54	1.00	0.94	0.65	0.67	0.47	0.52	0.37							
-1.0 m	1.97	1.97	1.50	1.02	0.95	0.66	0.68	0.48									
-1.5 m			0.95	0.95	0.67	0.67											
-2.0 m																	

### E27.2SR DIPPERSTICK 1 120 mm

HEIGHT																REACH m	
+3.5 m								0.53	0.53								
+3.0 m										0.47	0.47						
+2.5 m										0.47	0.47	0.48	0.36				
+2.0 m								0.59	0.59	0.52	0.47	0.49	0.36				
+1.5 m					1.05	0.85	0.74	0.60	0.60	0.45	0.50	0.35					
+1.0 m							0.82	0.57	0.62	0.44	0.49	0.35			0.40	0.28	4.00
+0.5 m					0.98	0.77	0.80	0.56	0.61	0.43	0.49	0.34					
0					1.14	0.77	0.79	0.55	0.60	0.42	0.48	0.33					
-0.5 m	1.08	1.08	1.28	1.28	0.14	0.77	0.79	0.55	0.60	0.42	0.48	0.33					
-1.0 m	1.62	1.62	1.67	1.30	1.15	0.78	0.80	0.55	0.61	0.42							
-1.5 m			1.27	1.27	0.91	0.80	0.67	0.56									
-2.0 m					0.53	0.53											

### E27.2SR DIPPERSTICK 1 370 mm

HEIGHT																REACH m	
+4.0 m								0.47	0.47								
+3.5 m										0.42	0.42						
+3.0 m												0.42	0.36				
+2.5 m												0.41	0.36				
+2.0 m										0.46	0.46	0.44	0.36	0.40	0.28		
+1.5 m					0.86	0.86	0.64	0.61	0.54	0.45	0.48	0.35	0.40	0.28			
+1.0 m					1.18	0.81	0.80	0.58	0.62	0.44	0.49	0.34	0.40	0.27	0.36	0.25	4.20
+0.5 m					1.14	0.77	0.80	0.55	0.61	0.42	0.48	0.33	0.39	0.27			
0					0.64	0.64	1.13	0.76	0.79	0.54	0.60	0.41	0.48	0.33	0.39	0.27	
-0.5 m	0.86	0.86	1.08	1.08	1.13	0.76	0.78	0.54	0.59	0.41	0.47	0.33					
-1.0 m	1.28	1.28	1.62	1.27	1.14	0.76	0.79	0.54	0.59	0.41	0.48	0.33					
-1.5 m	1.81	1.81	1.56	1.29	1.06	0.78	0.78	0.55	0.56	0.42							
-2.0 m			0.99	0.99	0.70	0.70	0.45	0.45									

# PARTS AND SERVICE

The New Holland dealer network is, in itself, the best guarantee of continued productivity for the machines it delivers to its customers. New Holland service technicians are fully equipped to resolve all maintenance and repair issues, with each and every service point providing the high standards they are obliged to observe under New Holland's stringent quality guidelines. The New Holland global parts network ensures fast, reliable, replacement parts for less downtime, increased productivity and, of course, profitable operation for its customers.



AT YOUR OWN DEALERSHIP

The information contained in this brochure is intended to be a general nature only. The NEW HOLLAND KOBELCO CONSTRUCTION MACHINERY S.p.A. company may at any time and from time to time, for technical or other necessary reasons, modify any of the details or specifications of the product described in this brochure. Illustrations do not necessarily show products in standard conditions. The dimensions, weights and capacities shown herein, as well as any conversion data used, are approximate only and are subject to variations within normal manufacturing techniques.

Published by NEW HOLLAND KOBELCO CONSTRUCTION MACHINERY S.p.A.  
Printed in Italy - LEADER Firenze - Cod. 73301 041GB - Printed 10/07

Printed on recycled paper  
CoC-FSC 000010 CQ Mixed sources



ELEMENTAL  
CHLORINE  
FREE  
GUARANTEED



**NEW HOLLAND**

CONSTRUCTION

**BUILT AROUND YOU**

[www.newholland.com](http://www.newholland.com)