



# NEW HOLLAND

## **E 30.2<sub>SR</sub>** **E 35.2<sub>SR</sub>**

NEW HOLLAND KOBELCO



	E30.2SR	E35.2SR
NET FLYWHEEL POWER	22 kW - 30 hp	
OPERATING WEIGHT (MAX)	3 250 kg	3 840 kg
REAR END SWING RADIUS	775 mm	850 mm
BUCKET CAPACITY	0.05 - 0.12 m <sup>3</sup>	



**NEW HOLLAND**

**CONSTRUCTION**

**BUILT AROUND YOU**

# E30.2/35.2SR\*

## PERFORMANCE

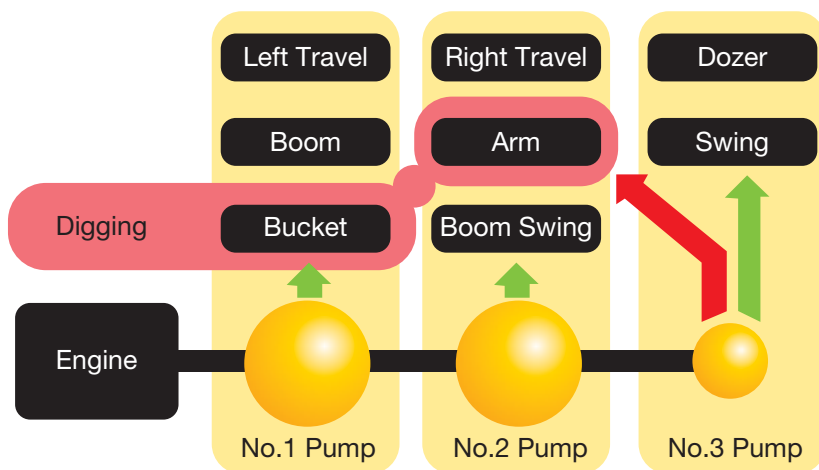
FAST, FULL-POWERED  
DIGGING AND LEVELLING



### DOZER BLADE SHAPE

- Conventional dozer blades simply push the earth straight ahead and the earth spills down behind the blade. Our new blade design solves this problem by forming the earth into an arc that always falls forward. As this prevents earth from falling behind the blade, only "one pass" is needed.

POWERFUL AND EFFICIENT DOZER  
PERFORMANCE FOR OUTSTANDING  
LEVELLING OPERATIONS



### INTEGRATED-FLOW PUMP SYSTEM (THREE PUMPS) FOR TOTAL SIMULTANEOUS MOVEMENTS

- The instant the machine begins to dig, extra output from the third pump (which otherwise powers the swing and dozer circuits) is directed to the arm circuit for added power. This ensures fast and smooth arm operation even under heavy loads.

\* A product of the global alliance between CNH and KOBELCO



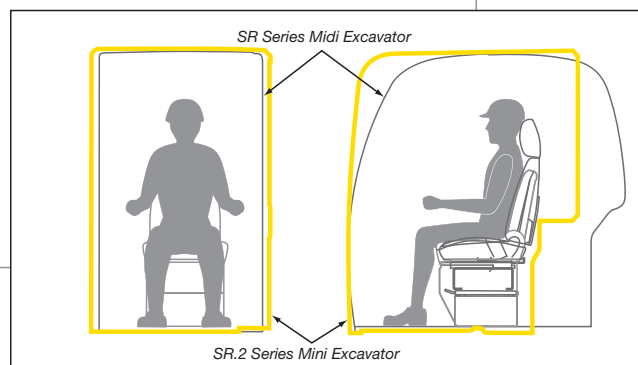
# COMFORT SPACIOUS WORK ENVIRONMENT

- “High Space” cab with perfect visibility in all directions thanks to the wide glass area and transparent cab roof. Extremely low noise level and effective reduction of vibrations. All controls are within hand reach and in ergonomic position: more like a “living room” than a cab, providing maximum operator comfort.
- The floor space has been widened and the sliding range of the seat has been increased to give operators plenty of foot room. Wide operational space with more room between the left and right control consoles.



## RESPECT FOR THE ENVIRONMENT

The E30.2/35.2SR respect the European “reduced noise level” as per directive 2000/14/EC phase 2.



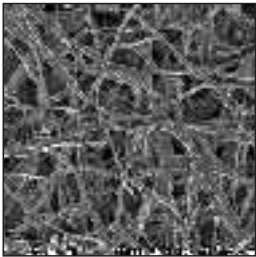
# E30.2/35.2SR

## MAINTENANCE AND DURABILITY

### EASY MAINTENANCE

- Start-up checks are essential for safe and reliable machine operation. With the SR.2 machines, all start-up checks can be performed at ground level, with an easy-to-understand layout and cover design that simplify access and reduce check times.

CONVENTIONAL FILTER



### NEW HOLLAND EXCLUSIVE FINE FILTER

- This exclusive super-fine filter is environmentally friendly, lasts 1000 hours, and is easy to replace.

SUPER FINE FILTER



### HIGH DURABILITY

Whether you are digging, loading, lifting or levelling, it is the attachment that provides the key to better productivity. Our new high-tensile steel front attachment ensures that you can handle virtually any application. Similarly the cross-section area of the box-shaped boom has been increased for added strength.

#### Boom flexing resistance

Lengthwise: **12% UP**

Lateral: **12% UP**

Forged boom top  
Self-locking pins firmly lock the bottom and arm to prevent the boom top from opening laterally

# SPECIFICATIONS

## MAIN FEATURES

Net flywheel power (ISO14396) .....	22 kW/30 hp
Operating weight with steel shoes .....	
canopy .....	3110/3700 kg
cab .....	3250/3840 kg
Maximum digging depth .....	3100/3350 mm
Breakout force: bucket .....	28.0 kN
dipperstick (1320 mm) .....	18.0/19.0 kN
Transport length .....	4390/4710 mm
Transport width .....	1550 / 1700 mm
Transport height .....	2570 mm

## ENGINE

Make .....	YANMAR
Model .....	3TNV88-PYB
Type .....	4-stroke diesel, direct injection
Number of cylinders .....	3
Displacement .....	1650 cm <sup>3</sup>
Rated speed .....	2400 rpm

**“Auto-Idling”** as standard.  
*Tier 2 emissioned engine conforms to 97/68/EC STAGE 2 Rules*

## ELECTRICAL SYSTEM

Batteries .....	1 x 64 Ah
Voltage .....	12 V
Alternator .....	55 A
Starter motor .....	1.7 kW

## HYDRAULIC SYSTEM

**S.H.S. (Smart Hydraulic System)** with two axial piston variable displacement pumps and one gear pump for completely fully simultaneous movements, including blade and slewing.

The three pumps ensure full use of all installed hydraulic power in individual and combined movements.

Pumps:

- Variable displacement hydraulic pumps .....	axial piston type
Total delivery .....	2 x 38 l/min
Gear pump delivery .....	21 l/min
Maximum operating pressure .....	230 bar

## SWING

Hydraulic motor .....	axial piston type
Swing speed .....	9 rpm
Swing brake .....	automatic
Boom slewing angle:	
- left .....	70°
- right .....	60°

Additional bolted counterweight is available when “High stability” performance is required.

Weight .....	+ 250 kg
Rear end swing radius .....	+ 90 mm

Minimum (775 mm) rear end swing radius ensures upperstructure to remain within track overall dimensions.

## UNDERCARRIAGE

Length of track on ground .....	1540/1700 mm
Gauge .....	1250/1400 mm
Shoe width (Rubber/Steel) .....	300 mm
Ground pressure .....	from 0.29/0.31 to 0.32/0.33 bar
Upper/lower rollers .....	1/4
Travel speeds .....	2

**“Automatic DownShift”** as standard

Travel speed range (Rubber or Steel tracks) .....	2.5/4.5 km/h
Maximum continuous slope .....	58% (30°)

## BLADE

Width x height .....	1500/1700 x 345 mm
Blade lift .....	560/540 mm
Blade lower .....	440 mm

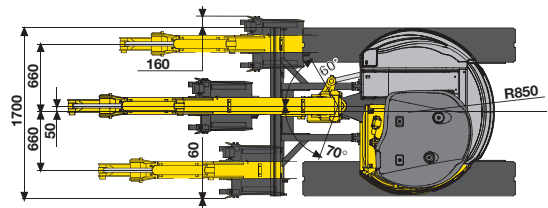
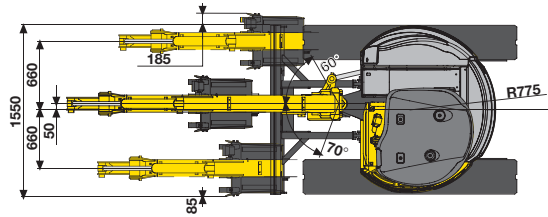
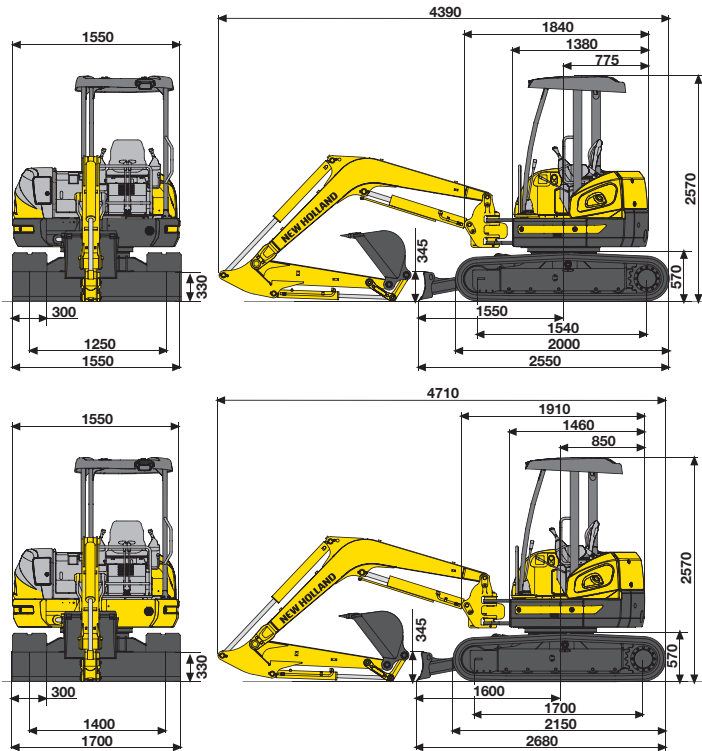
## CAPACITIES

	litres
Fuel .....	38.0
Coolant .....	4.6
Engine oil .....	6.7
Hydraulic system .....	48.0



# E30.2/35.2SR

## DIMENSIONS (mm) - OPERATING WEIGHT



## DIGGING PERFORMANCE

(cab/canopy)

### E30.2SR

DIPPERSTICK	mm	1180	1470 (standard)
A	mm	2480/1920	2480/2000
B	mm	4780	5770
C	mm	4930	5200
D	mm	2830/3360	2950/3550
E	mm	2160	2430
F	mm	4180/4770	4300/4960
G	mm	2810	3100
X	mm	560	560
Y	mm	410	410

### BREAKOUT FORCE

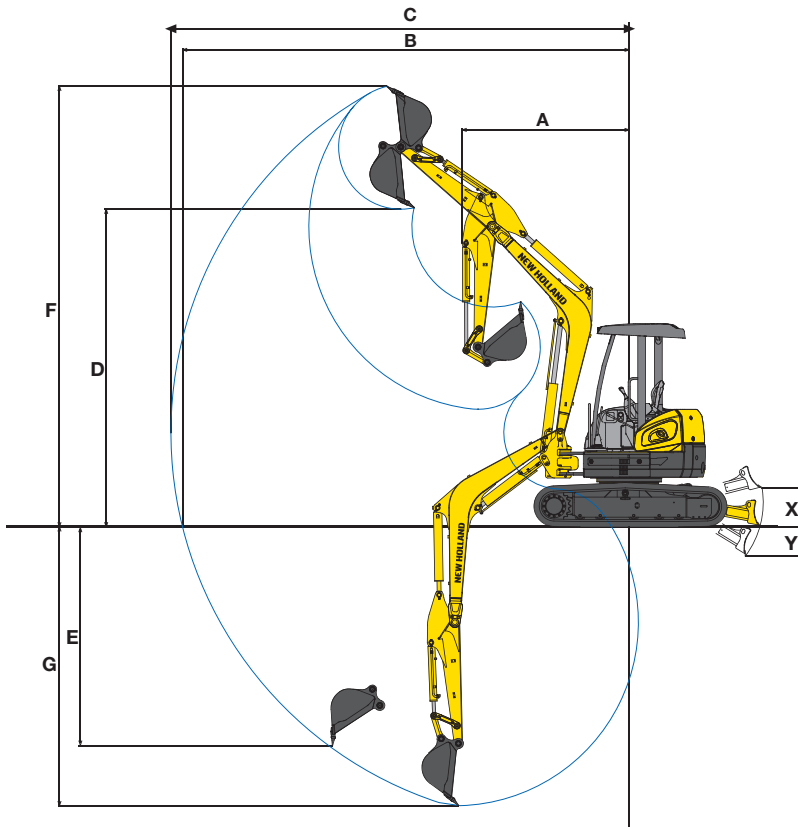
BUCKET	kN	28.0	28.0
DIPPERSTICK	kN	18.0	15.0

### E35.2SR

DIPPERSTICK	mm	1320	1590 (standard)
A	mm	2560/2040	2570/2070
B	mm	5110	5370
C	mm	5240	5500
D	mm	3040/3580	3150/3760
E	mm	2390	2650
F	mm	4370/4980	4490/5160
G	mm	3080	3350
X	mm	540	540
Y	mm	440	440

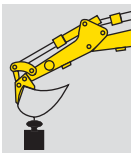
### BREAKOUT FORCE

BUCKET	kN	28.0	28.0
DIPPERSTICK	kN	19.0	17.0



# LIFTING CAPACITY

VALUES ARE EXPRESSED IN TONNES



## RADIUS OF LOAD

1.0 m		1.5 m		2.0 m		2.5 m		3.0 m		3.5 m		4.0 m		4.5 m		At max reach	
FRONT	SIDE	FRONT	SIDE	FRONT	SIDE	FRONT	SIDE	FRONT	SIDE	FRONT	SIDE	FRONT	SIDE	FRONT	SIDE	FRONT	SIDE

### E30.2SR DIPPERSTICK 1180 mm

HEIGHT																		
+3.5 m									0.59	0.48								
+3.0 m											0.49	0.42						
+2.5 m											0.49	0.42						
+2.0 m									0.63	0.54	0.49	0.41	0.38	0.32				
+1.5 m							0.82	0.69	0.61	0.52	0.47	0.40	0.38	0.32				
+1.0 m							0.78	0.65	0.59	0.50	0.46	0.39	0.37	0.31	0.34	0.29		4.20
+0.5 m							0.76	0.63	0.57	0.48	0.45	0.38	0.36	0.31				
0						1.08	0.88	0.75	0.62	0.57	0.48	0.45	0.38	0.36	0.31			
-0.5 m	1.36	1.36	1.49	1.49	1.09	0.89	0.75	0.62	0.56	0.47	0.44	0.38						
-1.0 m	1.90	1.90	1.95	1.52	1.11	0.90	0.76	0.63	0.57	0.48								
-1.5 m	2.58	2.58	1.99	1.55	1.13	0.92	0.77	0.65	0.58	0.49								
-2.0 m					1.02	0.96												
-2.5 m																		

### E30.2SR DIPPERSTICK 1470 mm

HEIGHT																		
+3.5 m											0.49	0.42						
+3.0 m																		
+2.5 m											0.49	0.42	0.38	0.33				
+2.0 m											0.48	0.41	0.38	0.32				
+1.5 m					1.21	1.00	0.83	0.70	0.61	0.52	0.47	0.40	0.37	0.31				
+1.0 m							0.79	0.66	0.59	0.50	0.46	0.39	0.36	0.31	0.29	0.25		4.50
+0.5 m					1.08	0.88	0.75	0.63	0.57	0.48	0.44	0.37	0.36	0.30				
0			0.80	0.80	1.06	0.87	0.74	0.61	0.55	0.46	0.43	0.36	0.35	0.29				
-0.5 m	1.08	1.08	1.27	1.27	1.07	0.87	0.73	0.61	0.55	0.46	0.43	0.36	0.35	0.29				
-1.0 m	1.51	1.51	1.81	1.47	1.08	0.87	0.73	0.61	0.55	0.46	0.43	0.36						
-1.5 m	2.03	2.03	1.93	1.50	1.09	0.89	0.74	0.62	0.56	0.47								
-2.0 m	2.69	2.69	1.98	1.54	1.12	0.92	0.77	0.64										
-2.5 m					0.78	0.78												

### E35.2SR DIPPERSTICK 1320 mm

HEIGHT																		
+3.5 m											0.60	0.60						
+3.0 m																		
+2.5 m											0.63	0.62	0.57	0.49				
+2.0 m										0.79	0.78	0.70	0.61	0.56	0.49			
+1.5 m							1.18	1.00	0.88	0.76	0.69	0.59	0.55	0.48	0.45	0.39		
+1.0 m							1.13	0.96	0.85	0.73	0.67	0.58	0.54	0.47	0.45	0.39	0.44	0.38
+0.5 m							1.10	0.93	0.83	0.71	0.66	0.57	0.54	0.46				
0					1.36	1.31	1.09	0.92	0.82	0.70	0.65	0.56	0.53	0.46				
-0.5 m	1.39	1.39	1.45	1.45	1.61	1.32	1.09	0.92	0.82	0.70	0.65	0.55	0.53	0.46				
-1.0 m	1.85	1.85	2.08	2.08	1.62	1.34	1.10	0.93	0.82	0.70	0.65	0.56						
-1.5 m	2.41	2.41	2.46	2.33	1.65	1.36	1.11	0.94	0.83	0.71								
-2.0 m			1.78	1.78	1.27	1.27	0.96	0.96										
-2.5 m					0.65	0.65												

### E35.2SR DIPPERSTICK 1590 mm

HEIGHT																		
+4.0 m											0.55	0.55						
+3.5 m																		
+3.0 m													0.53	0.50				
+2.5 m													0.55	0.49	0.46	0.40		
+2.0 m											0.63	0.61	0.56	0.49	0.45	0.39		
+1.5 m							1.07	1.02	0.84	0.76	0.69	0.59	0.55	0.48	0.45	0.39		
+1.0 m							1.14	0.96	0.85	0.73	0.67	0.58	0.54	0.47	0.44	0.38	0.40	0.34
+0.5 m					1.05	1.05	1.10	0.93	0.83	0.71	0.67	0.56	0.53	0.46	0.44	0.38		
0			0.81	0.81	1.36	1.30	1.08	0.91	0.81	0.69	0.64	0.55	0.52	0.45	0.43	0.37		
-0.5 m	1.13	1.13	1.27	1.27	1.59	1.30	1.08	0.91	0.80	0.69	0.63	0.54	0.52	0.44				
-1.0 m	1.52	1.52	1.76	1.76	1.60	1.31	1.08	0.91	0.80	0.68	0.63	0.54	0.52	0.45				
-1.5 m	1.98	1.98	2.34	2.29	1.61	1.33	1.09	0.92	0.81	0.69	0.64	0.55						
-2.0 m	2.52	2.52	2.30	2.30	1.54	1.35	1.11	0.93	0.83	0.71								
-2.5 m			1.37	1.37	0.97	0.97	0.68	0.68										

As per ISO 10567 with excavator equipped with bucket

# PARTS AND SERVICE

The New Holland dealer network is, in itself, the best guarantee of continued productivity for the machines it delivers to its customers. New Holland service technicians are fully equipped to resolve all maintenance and repair issues, with each and every service point providing the high standards they are obliged to observe under New Holland's stringent quality guidelines. The New Holland global parts network ensures fast, reliable, replacement parts for less downtime, increased productivity and, of course, profitable operation for its customers.



AT YOUR OWN DEALERSHIP

The information contained in this brochure is intended to be a general nature only. The NEW HOLLAND KOBELCO CONSTRUCTION MACHINERY S.p.A. company may at any time and from time to time, for technical or other necessary reasons, modify any of the details or specifications of the product described in this brochure. Illustrations do not necessarily show products in standard conditions. The dimensions, weights and capacities shown herein, as well as any conversion data used, are approximate only and are subject to variations within normal manufacturing techniques.

Published by NEW HOLLAND KOBELCO CONSTRUCTION MACHINERY S.p.A.  
Printed in Italy - LEADER Firenze - Cod. 73301 042GB - Printed 10/07

Printed on recycled paper  
CoC-FSC 000010 CQ Mixed sources



ELEMENTAL  
CHLORINE  
FREE  
GUARANTEED

 **NEW HOLLAND**

**CONSTRUCTION**

**BUILT AROUND YOU**

[www.newholland.com](http://www.newholland.com)