



NEW HOLLAND

E150 BLADE RUNNER



NET FLYWHEEL POWER	70 kW - 94 hp
MAX OPERATING WEIGHT	16 200 kg
PAT DOZER BLADE CAPACITY	2.19 m ³

 **NEW HOLLAND**

CONSTRUCTION

BUILT AROUND YOU

E150 BLADE

SHORT RADIUS & EXCAVATOR DOZER

POWER ANGLE TILT (PAT) DOZER BLADE

- 6 way
 - up/down
 - angle - both directions
 - tilt - both directions
- Float
- 2.19 m³ capacity
- 3255 mm max width (wings extended)
- 2475 mm min width (wings folded)



The E150 Blade Runner's blade has a bolt-on reversible cutting edge

DOZER BLADE	
Dozer blade type	Power angle tilt (PAT)
Dozer blade capacity	2.19 m ³
Dozer blade overall width	3255 mm
Dozer blade overall width (Wings folded)	2475 mm
Dozer blade height	800 mm
Maximum angle	25° left/right
Digging depth	580 mm
Dozer maximum tilt height	445 mm

The E150 Blade Runner has foldable and removable dozer blade wings that maintain the crucial 2.50 m shipping width.



RUNNER SPECIFICATIONS



TIER 2 EMISSIONED ENGINE

Net flywheel power70 kW/94 hp
 Rated2200 rpm
 Make and modelISUZU - A-4BG1T
 Typediesel, 4-stroke, direct injection
 Aspirationturbo
 Number of cylinders4
 Displacement4329 cm³
 Bore/stroke102 x 120 mm

Electronic engine rpm control dial type

Auto-Idling selector returns engine to minimum rpm when all controls are in neutral position.



ELECTRICAL SYSTEM

Voltage24 V
 Alternator40 A
 Starter motor5 kW
 Standard maintenance-free batteries2 x 12 V
 Batteries capacity80 Ah



HYDRAULIC SYSTEM

S.H.S. (Smart Hydraulic System) and **computerised hydraulic pump delivery** for perfect controllability and simultaneity of all movements.

Operating mode selector: **H** – heavy duty
S – standard
FC – precision jobs

Main pumps:

Two variable delivery axial piston pumps
 Pumps automatically revert to zero delivery with controls in neutral
 Maximum delivery2 x 119 l/min
 Dozer blade circuit gear type pump
 Maximum delivery56 l/min
 Piloting circuit gear type pump
 Maximum delivery21 l/min

Maximum operating pressure:

Equipment345 bar
 Superstructure swing280 bar
 Travel345 bar
 Dozer blade245 bar
 Pilot circuit50 bar

Hydraulic cylinders	Number	Bore	Stroke
Lift	2	100 mm	1038 mm
Penetration	1	115 mm	1150 mm
Bucket	1	95 mm	885 mm



TRANSMISSION

Typehydrostatic, two-speed
 Travel motors2, axial piston type, double displacement
 Brakesautomatic discs type
 Final drivesoil bath, planetary reduction
 Gradeability (continuous)70% (35°)
 Travel speeds:
 Lowfrom 0 to 3.0 km/h

Highfrom 0 to 5.0 km/h
 Traction force14500 daN

Automatic DownShift device: to move travel motors to maximum displacement position with selector on speed when greater traction is required.



SWING

Swing motoraxial piston type
 Swing brakeautomatic discs type
 Final driveoil bath, planetary reduction
 Swing ringoil bath type
 Swing speed11.7 rpm



CAB AND CONTROLS

Transparent upper cab roof.
 Automatic conditioning.
 Controlspiloted
 Two cross path pattern levers actuate all equipment movements and superstructure swing.
 One lever for blade lower/lift/angle/tiltstandard
 Two pedals with detachable "hand" levers control all track movements, counter-rotation included.
 A safety lever completely neutralizes the piloting circuit.



UNDERCARRIAGE

HD track chain with sealed bushings
 Rollers
 Track rollers (each side)6
 Carrier rollers (each side)2
 Length of track on ground2800 mm
 Gauge1990 mm
 Shoes curved type500 - 600 - triple grouser



DOZER BLADE PAT (power angle tilt)

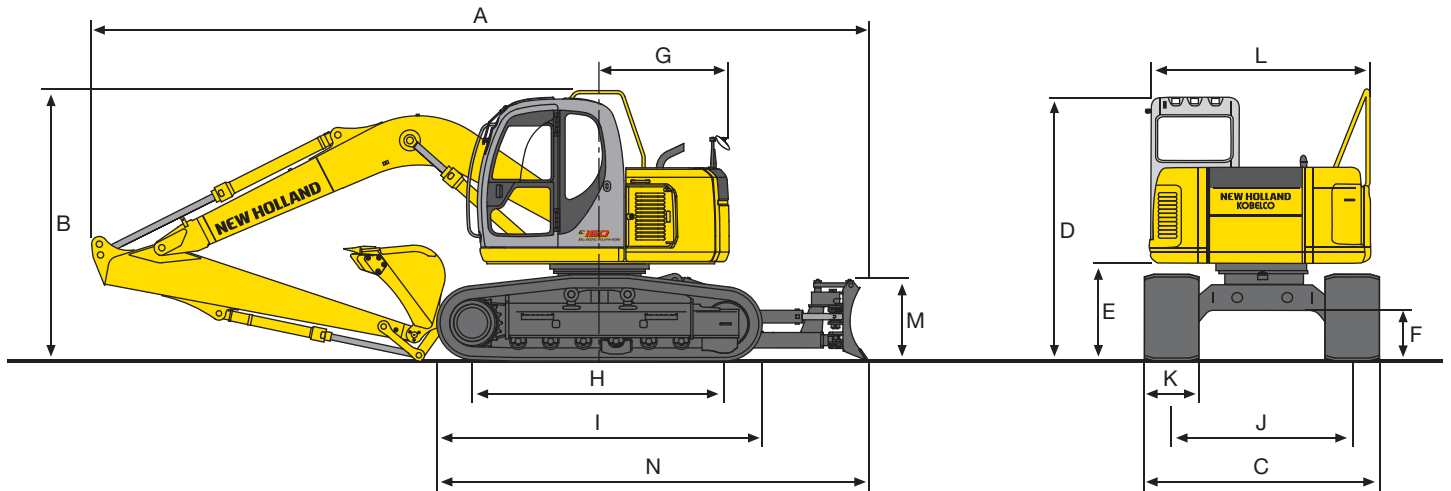
Tot. width (wings extended/folded) x height3255/2475 x 800 mm
 Capacity2.19 m³
 Maximum angle (left/right)25°
 Digging depth580 mm
 Dozer max tilt height445 mm



CAPACITIES

litres
 Lube oil13.0
 Coolant18.0
 Fuel tank168.0
 Hydraulic reservoir140.0

DIMENSIONS (mm) - OPERATING WEIGHTS



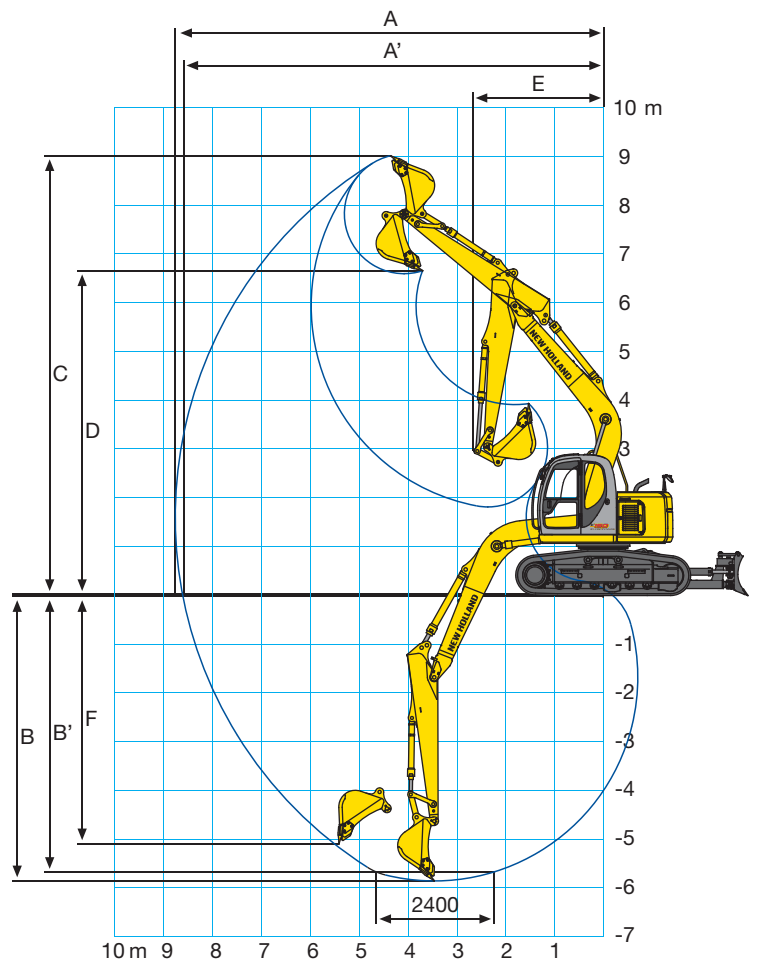
DIPPERSTICK	mm	2950
A Overall length	mm	8550
B Overall height (to top of handrail)	mm	2980
C Overall track width	mm	2490
D Overall height (to top of cab)	mm	2900
E Ground clearance of rear end	mm	1070
F Ground clearance	mm	525
G Tail swing radius	mm	1430
H Length of track on ground	mm	2800
I Overall length of crawler	mm	3590
J Track gauge	mm	1990
K Shoe width	mm	500
L Overall width of upper structure	mm	2410
M Height of blade	mm	800
N Length of undercarriage w/blade	mm	4760

CURVED TRIPLE GROUSER SHOE WIDTH	mm	500	600
OPERATING WEIGH	kg	15950	16200
GROUND PRESSURE	bar	0.51	0.43

DIGGING PERFORMANCE

DIPPERSTICK LENGTH	mm	2950
A Max. digging reach	mm	8770
A' Max. digging reach at ground level	mm	8620
B Max. digging depth	mm	5850
B' Digging depth at 2400 mm level bottom	mm	5660
C Max. digging height	mm	9020
D Max. dumping clearance	mm	6600
E Min. front swing radius	mm	2650
F Max. vertical wall digging depth	mm	5090

BREAKOUT FORCE: "POWER BOOST" ON		
BUCKET	daN	9700
ARM	daN	5950



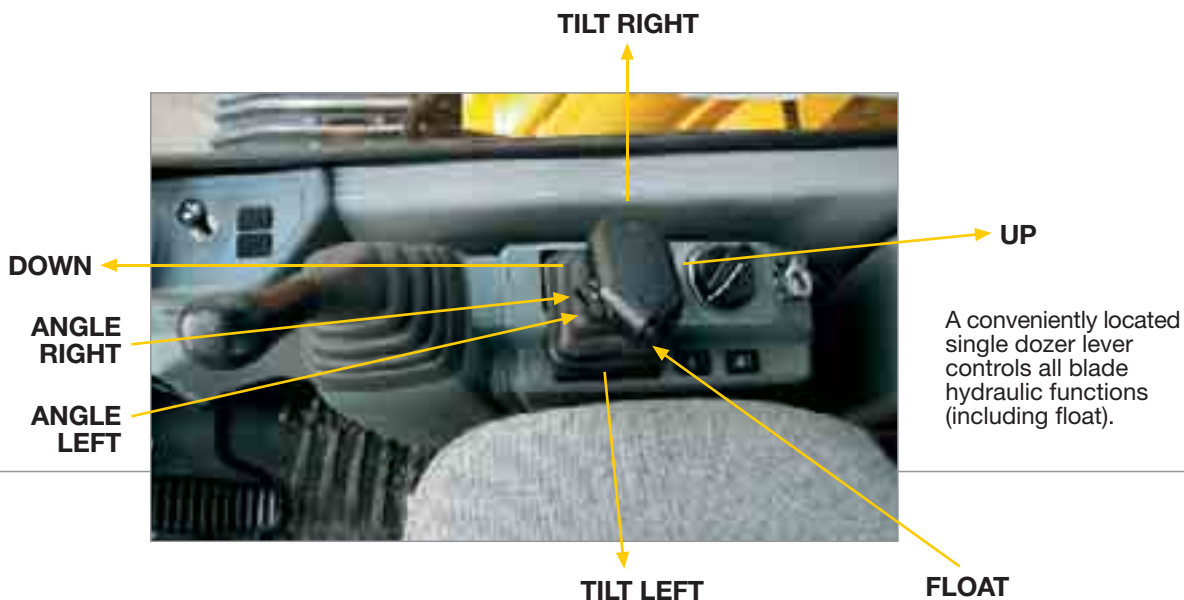
RUNNER*

ONE MACHINE TO COMPLETE
A WIDE VARIETY OF JOBS WITH
A SMALLER INVESTMENT
OF EQUIPMENT & PERSONNEL

FULL-SIZED, COMFORTABLE

A Cab Designed for Comfort and Performance.

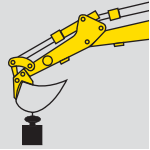
New Holland has achieved an ideal balance between comfort and logistics in the E150 Blade Runner's ergonomic cab design. Controls are sensibly located for ease of use. There's a fully adjustable suspension seat and control console. Air conditioning is standard. Effective lighting, both inside the cab and on the machine's exterior, affords excellent visibility in low light situations. Operators enjoy significantly better blade visibility due to the excavator-based design.



A conveniently located single dozer lever controls all blade hydraulic functions (including float).

LIFTING CAPACITY

VALUES ARE EXPRESSED IN KILOS

	RADIUS OF LOAD							
	1.5 m		3.0 m		4.5 m		6.0 m	
	FRONT	SIDE	FRONT	SIDE	FRONT	SIDE	FRONT	SIDE

E150 BLADE RUNNER - DIPPERSTICK 2950 mm - BLADE UP

HEIGHT	1.5 m		3.0 m		4.5 m		6.0 m	
+7.5 m								
+6.0 m							1560 *	1560 *
+4.5 m							2650 *	2120
+3.0 m					3440 *	3290	2540	2020
+1.5 m			7030 *	5640	3880	3000	2410	1890
0	2650 *	2650 *	7270	5150	3620	2770	2290	1780
-1.5 m	4890 *	4890 *	7110	5020	3500	2660	2220	1720
-3.0 m	7590 *	7590 *	7180	5070	3500	2660		
-4.5 m			4800 *	4800 *				

E150 BLADE RUNNER - DIPPERSTICK 2950 mm - BLADE DOWN

HEIGHT	1.5 m		3.0 m		4.5 m		6.0 m	
+7.5 m								
+6.0 m							1560 *	1560 *
+4.5 m							2670 *	2120
+3.0 m					3440 *	3290	2970 *	2020
+1.5 m			7030 *	5640	4400 *	3000	3380 *	1890
0	2650 *	2650 *	8340 *	5150	5100 *	2770	3710 *	1780
-1.5 m	4890 *	4890 *	8300 *	5020	5280 *	2660	3760 *	1720
-3.0 m	7590 *	7590 *	7270 *	5070	4770 *	2660		
-4.5 m			4800 *	4800 *				

The table values refer to **ISO 10567** for excavator equipped with bucket. The indicated load is no more than 87% of hydraulic system lift capacity or 75% of static tipping load. Values marked with an asterisk are limited by the hydraulic system.

AT YOUR OWN DEALERSHIP

The information contained in this brochure is intended to be a general nature only. The NEW HOLLAND KOBELCO CONSTRUCTION MACHINERY S.p.A. company may at any time and from time to time, for technical or other necessary reasons, modify any of the details or specifications of the product described in this brochure. Illustrations do not necessarily show products in standard conditions. The dimensions, weights and capacities shown herein, as well as any conversion data used, are approximate only and are subject to variations within normal manufacturing techniques.

Published by NEW HOLLAND KOBELCO CONSTRUCTION MACHINERY S.p.A.
Printed in Italy - LEADER Firenze - Cod. 73301 227GB - Printed 09/08

Printed on recycled paper
CoC-FSC 000010 CQ Mixed sources



BUILT AROUND YOU

www.newholland.com